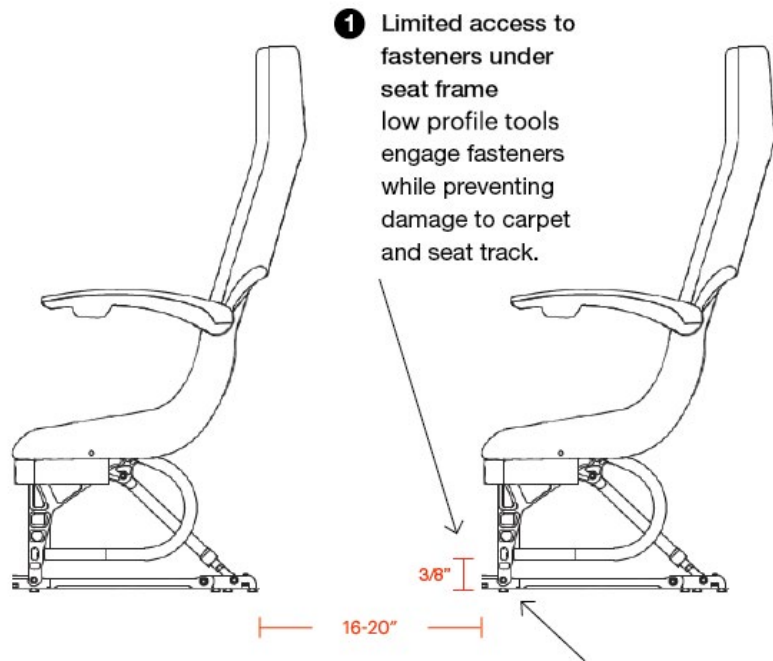


## Passenger Seat Removal and Installation Tools

**A guide for Boeing-designed specialized production tools to remove and install passenger seats, lower labor 30% and eliminate quality errors.**

**All Aircraft Models – Boeing & Airbus**

# Boeing-designed tools address 3 critical maintenance challenges.



**1** Limited access to fasteners under seat frame  
low profile tools engage fasteners while preventing damage to carpet and seat track.

**2** Close cabin quarters  
Ergonomic offsets and grip designs allow tool use without operator fatigue or strain.

**3** Unique fastener designs  
Notched grip and deep hex features mate with specialty fasteners, meaning no more slipping wrenches, no more seat track damage, and no more busted knuckles.

**1 2**



ST2580-437-1006-I  
Front Leg Seat Wrench

**3**



ST2580-334C-1-145  
Anti-Rattle Nut Wrench

# Specific Tool Highlights

The most frequently used Boeing-designed tools for OEM seat replacement.



## ST2580-334C-1

Our most popular seat installation, removal tool, this wrench provides an ergonomic grip and two points of engagement on seat track anti-rattle nuts to eliminate slip while loosening or tightening these fasteners.



## ST2628B-1

A toolbox staple, lightweight and low cost, this standard wrench configuration is used for installation and removal of seat track star nuts. Available in multiple configurations including short, long, and offset handle configurations.



## ST2580-437-1132-1

The front legs of many common seating configurations are notoriously difficult to access. These low-profile wrenches enable access to the locking nuts that secure them. Available in offset, flat, and side-open versions.



## ST2580-572A-1

Weber Sigma coach seating systems are equipped with a locking mechanism for the anti-rattle nut. This slotted power screwdriver adapts to any standard drill to make their removal a breeze.

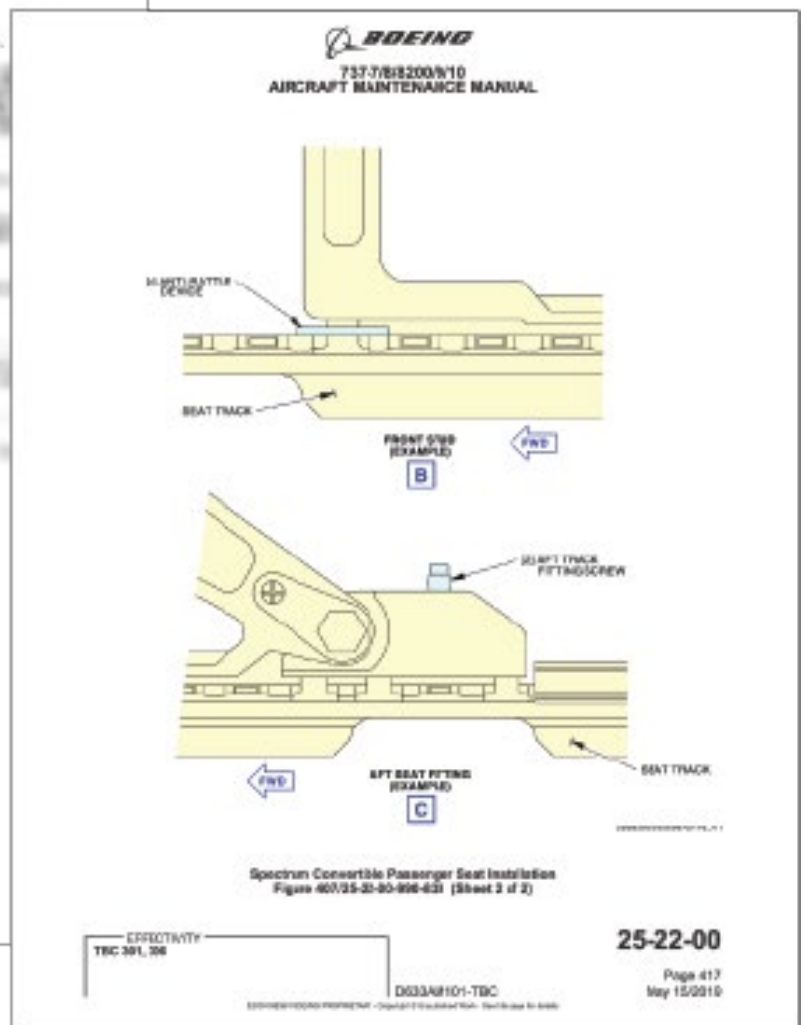
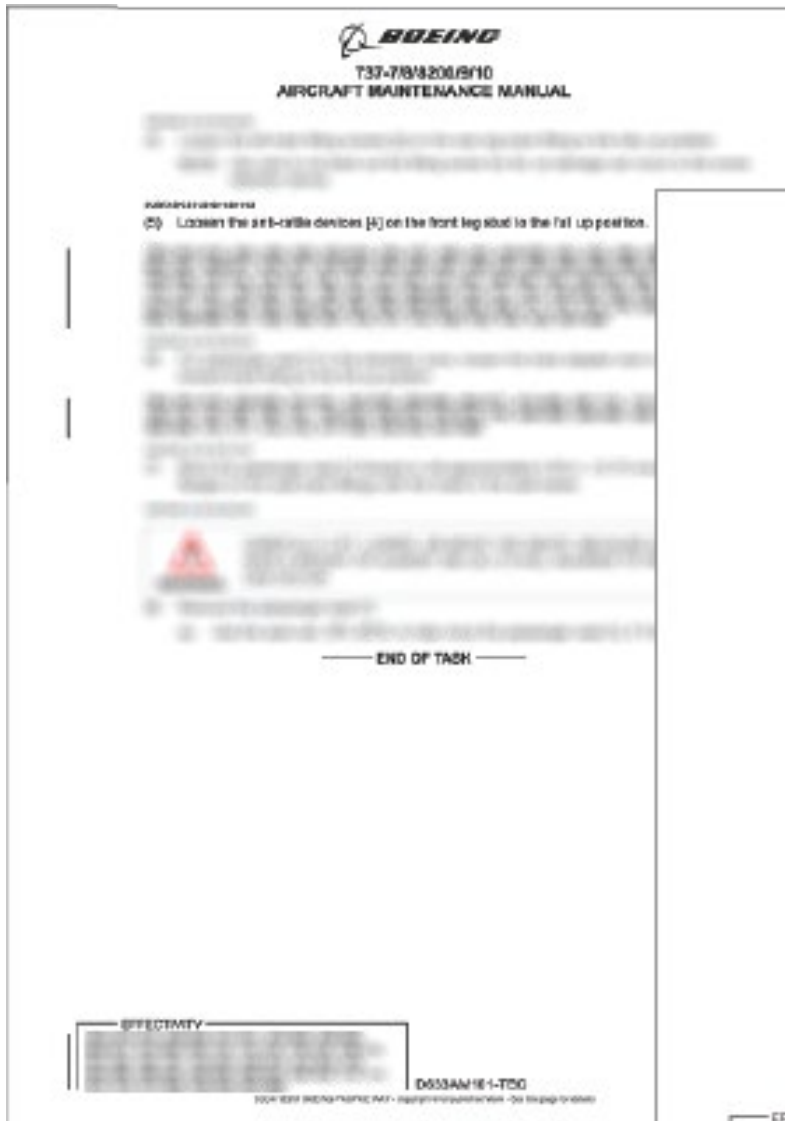


## ST2580-462C-1-1

This adapter makes it simple to ensure your seats are secured to the seat track with the proper torque. Compatible with any standard 1/4" square drive torque wrench.

# Aircraft Maintenance Manual (AMM) and Specialized Tool Designations

Boeing technical publications include only generic language related to removal of seats, and no specialty tools are indicated as required for use. Boeing, however, has many specialized tools that they use to install seats when producing new aircraft. Pacific Tool verified the front leg fastener types and dimensions to match the Boeing-designed tool used to install seats during production of new airplanes. See page 6 for the Passenger Seat to Tool references.

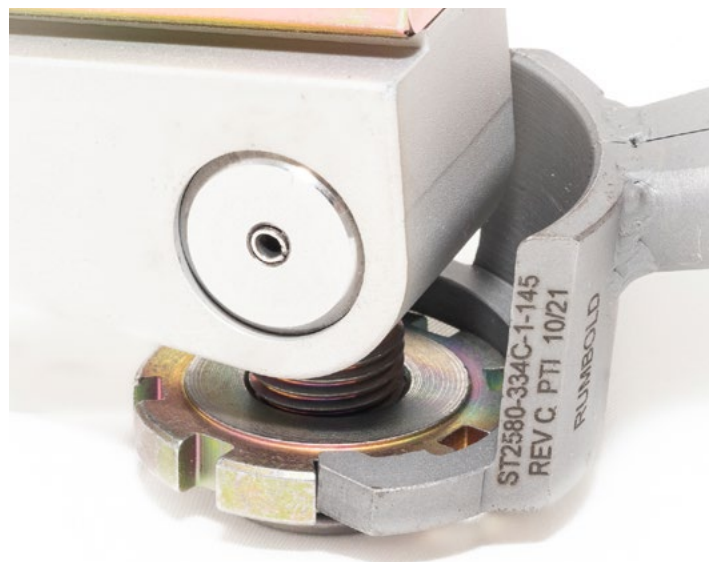


# Tool Explanation and References

## Seat Wrench

ST2580 – Various Part Numbers

- 1 Ergonomic offset for easier movement of hands while loosening or tightening fasteners



- 2 Thin-profile heat treated 4340 steel fits into tight areas beneath seat frames and maintains the highest strength for a long tool life



- 3 Extended wrench head depth and grip features eliminate hand 'slips' and busted knuckles



- 4 Unique tools for all anti-rattle fastener designs (see page 6 for fastener-to-tool reference guide)



# Tool Explanation and References

## Fastener Removal Tool

Manufacturer	Models		Front Fastener Part Number	Primary Tool Part Number
B/E Aerospace Rockwell Collins	Pinnacle	These Seats Use One of the Following Fasteners and Related Tools	97123-001 97123-003 97123-007 97123-009 1057208-103	ST2580-437-1006-I ST2580-437-1006-I ST2580-437-1132-I Obsolete ST2580-437-566-I
	Spectrum			
	Spectrum Convertible			
	Millenium			
	Innovator II			
	Meridian			
	MiQ			
	Air Rest			
	Diamond			
	Super Diamond			
	Apex			
Opus				
Recaro	3410	These Seats Use One of the Following Fasteners and Related Tools	137-00-100-09 137-00-100-89 134-00-101	ST2580-334C-1-185 ST2580-334C-1-185 ST2580-334C-1-185
	3510			
	3520			
	3520D			
	3530			
	3610			
	3620			
	3710			
	4400/4410/4420			
	4710			
5710				
6510				
Safran				
Zodiac				
Weber	Z85	These Seats Use One of the Following Fasteners and Related Tools	869666-401 869666-401 115020-001 823377-401 823377-403	ST2580-572A-1 ST2580-572A-1 ST2580-572A-1 ST2580-334C-1-185 ST2580-334C-1-185
	Z100			
	Z110			
	Z110i			
	Z200			
	Z300			
	Z400			
	Z535i			
Z600				
Sicma	Sicma/65C9		91-000100-726-0	ST2580-334C-1-185
Rumbold	Contour		M78203-662	ST2580-334C-1-145



## Find the Right Tool

Pacific Tool provides Boeing customers and maintenance the right tool from the 25,000 Boeing-designed specialized production tool catalog to lower labor costs and reduce quality errors.

Pacific Tool connects a Boeing-designed specialized tools for production with a repair and maintenance activities and provides references for the tool to maintenance documentation and Boeing production standards.

Pacific Tool was founded in 1966, guided by the principles of engineering innovation, technology, data and service. With over 50 years serving Boeing, as well as its suppliers and customers, Pacific Tool is recognized as a pioneer in specialized tooling across the disciplines of fastening systems, assembly, and automation. Pacific Tool is AS9100 and ISO9001 certified. Officially licensed by Boeing.

Pacific Tool products can be purchased through Boeing Distribution Inc. (BDI).

For more information, call: **1-800-284-2551**

**North America & AOG:** 1-888-322-2589

**International Sales:** +1-972-586-1566

**[shop.boeing.com/  
aviation-supply](https://shop.boeing.com/aviation-supply)**